

# EnDeavor™

**UP for Strength.  
UP for Durability.  
UP for Everything.™**



EnDeavor™  
10' x 10'

**NEW**

## ENDEAVOR™ Professional Shelter

Own the strongest and most durable Instant Shelter® product in the world, the Endeavor™ shelter. This patented one-piece professional-grade shelter is a strong, octagonal-legged shelter built to perform and is ideal for command posts, recruiting, military, government and more. The Endeavor™ shelter has a frame constructed of 6061-T6 aircraft-grade aluminum and comes assembled with ALL-NEW hardware components and technology designed to make it stonger and endeavor to withstand the toughest enviroments.

Available in 10' x 10' and 10' x 15'

Matte Black Frame Shown  
Clear Aluminum Frame Also Available



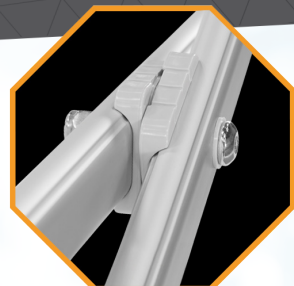
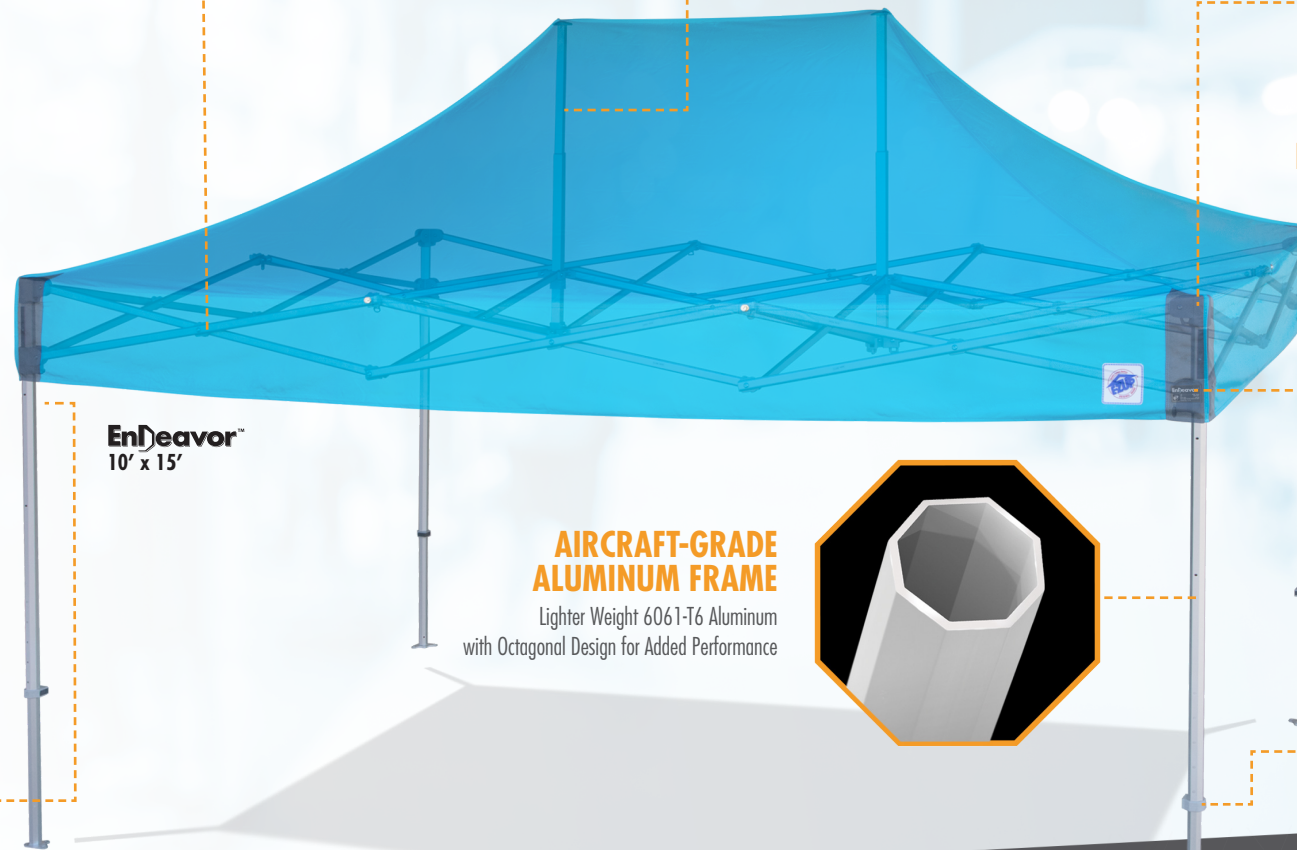
ezup.com

### Specifications

SIZE	10'x10' (3 m x 3 m)	10'x15' (3.7 m x 3.7 m)
SHADED AREA	100 sq ft (9 sq m)	150 sq ft (14 sq m)
FRAME	6061-T6 Aircraft-Grade Aluminum Frame is Rust Free and 25% Lighter Than Steel	6061-T6 Aircraft-Grade Aluminum Frame is Rust Free and 25% Lighter Than Steel
TOP FABRIC	Professional-Grade Fabric Meets CPAI-84, NFPA-701 and CAN/ULC-S109 Fire-Resistant Requirements	Professional-Grade Fabric Meets CPAI-84, NFPA-701 and CAN/ULC-S109 Fire-Resistant Requirements
TOP SPECIFICATIONS		
PRODUCT INCLUDES	Fabric Top, Folding Frame and Cover Bag	Fabric Top, Folding Frame and Cover Bag
FRAME SHIPPING WEIGHT	68 lbs. (27.4 kg)	100 lbs. (45.3 kg)
TOP SHIPPING WEIGHT	12 lbs. (5.4 kg)	15 lbs. (6.8 kg)
BOX DIMENSIONS TOP	26.5" L x 10.5" W x 3.5" H (67.3 cm x 26.6 cm x 8.8 cm)	26.5" L x 14.5" W x 4.5" H (67.3 cm x 36.8 cm x 11.4 cm)
BOX DIMENSIONS FRAME	67" L x 12.5" W x 11.5" H (1.68 m x 32 cm x 20 cm)	67" L x 17" W x 14" H (1.68 m x 43 cm x 35.5 cm)
MAXIMUM PEAK HEIGHT	11' 2" (3.4 m)	11' 2" (3.4 m)
MAXIMUM HEADROOM	6' 11" (2.2 m)	6' 11" (2.2 m)
MAXIMUM VALANCE CLEARANCE HEIGHT	6' 9" (2.1 m)	6' 9" (2.1 m)
CUSTOM PRINTING OPTIONS	Custom Graphics Available	Custom Graphics Available
WARRANTY	7 Years	7 Years

#### 10' x 10'

#### 10' x 15'

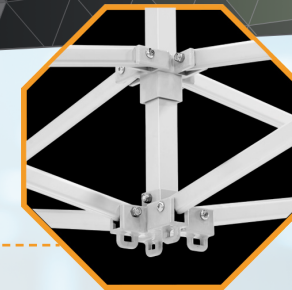


#### E-Z GLIDE TRUSS WASHERS

Provide Low Friction Smooth Set Up

#### AUTO PEAK® TENSIONER

Ensures Proper Top Fit and Form



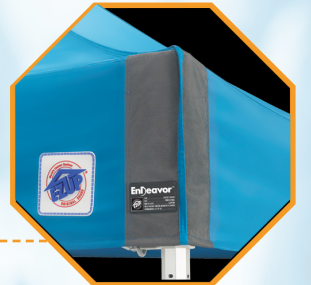
#### HIGH-STRENGTH CORNERS

Heavy-duty for Greater Durability Includes Built-In FXT Attachment Points



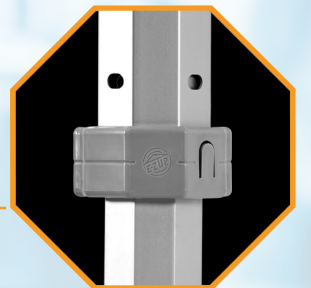
#### PROFESSIONAL-GRADE FABRIC TOP

Greater Durability and Longer Lasting Performance



#### TOGGLE LEG ADJUSTERS

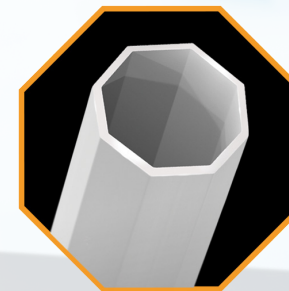
Comfortable Toggle Grip 5 Height Adjustment Options



EnDeavor™  
10' x 15'

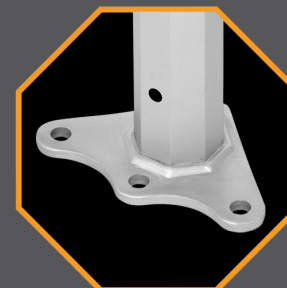
#### AIRCRAFT-GRADE ALUMINUM FRAME

Lighter Weight 6061-T6 Aluminum with Octagonal Design for Added Performance



#### AUTO-SLIDER® PULL PIN

Pull Pin Grooved for Quick Lock and Release



#### HEAVY-DUTY FOOT PAD

6061-T6 Aircraft-Grade Aluminum and Extra Wide for Increased Stability

### Recommended Uses

- Trade Shows
- Corporate Events
- Exhibit Booth
- Event Marketing
- Rental Industry
- Sponsorship Advertising
- Command Posts
- Industrial Applications
- Business & Civic Events
- Product Demonstrations
- Indoor & Outdoor Display
- Automotive & Racing Events
- Disaster Relief Services
- Emergency Response

**SETS UP IN SECONDS™**



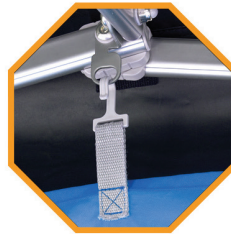
Matte Black Frame Shown



\*Deluxe Wide-Trax Roller Bag Sold Separately

## OPTIONAL ACCESSORIES

- Event Lights
- Deluxe Weight Bags
- Heavy-Duty Stake Kit
- Sidewalls & Railskirts
- Deluxe Wide-Trax™ Roller Bag
- ProFlag™ and Banners
- Tables & Table Covers
- Directors Chairs
- Graphic Sails & Liners



### FXT HOOKS

Next Generation FXT Hooks  
Easily Attach to Built-In  
FXT Attachment Points



### CENTER POST BRACKET

Easy Set Up and  
Tear Down



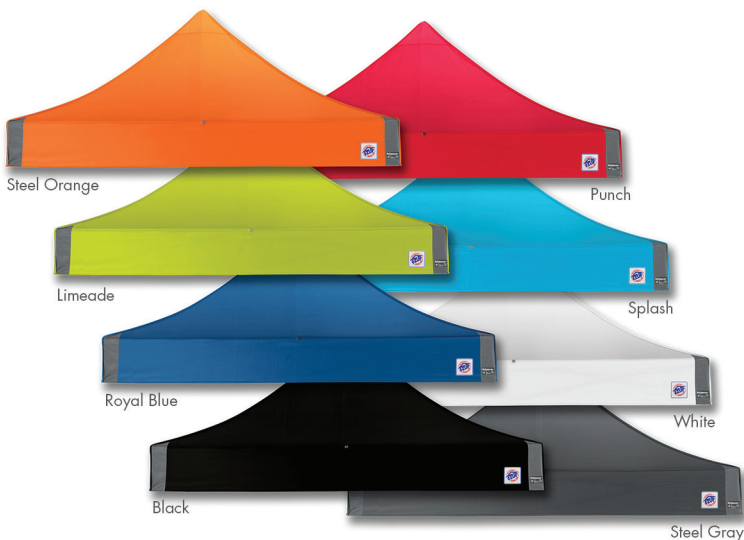
### FRAME BRACKETS

Heavy-Duty and  
Easy to Install

## MIX AND MATCH

Customize your Endeavor™ shelter to suit your style with a custom color top or custom-printed graphics! Whichever direction you go, your Endeavor™ shelter is UP for Everything™.

### AVAILABLE STOCK TOP COLORS



### AVAILABLE FRAME COLORS



Clear



Matte  
Black

### AVAILABLE PREMIUM TOP COLORS



GOLD



GRAPE



BURGUNDY



SILVER



NAVY BLUE



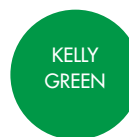
YELLOW



BONE



BEIGE



KELLY  
GREEN



FOREST  
GREEN



BROWN

International E-Z UP, Inc.  
1900 Second Street  
Norco, California 92860  
(951) 279-0999 • FAX (800) 810-8775

TO ORDER:  
**(800) 45-SHADE**  
(800) 457-4233

